

## What is TRiO?

TRiO is one of a series of programs established by Congress under Title IV of the Higher Education Act of 1965 to help students overcome financial, class, social and cultural barriers to higher education.

TRiO Student Support Services is 100 percent federally funded by the U.S. Department of Education in the amount of \$243,095.

Student Support Services is that branch of TRiO designed to increase the retention, graduation and transfer rate of eligible students from two- to four-year institutions by fostering a climate supportive of students.

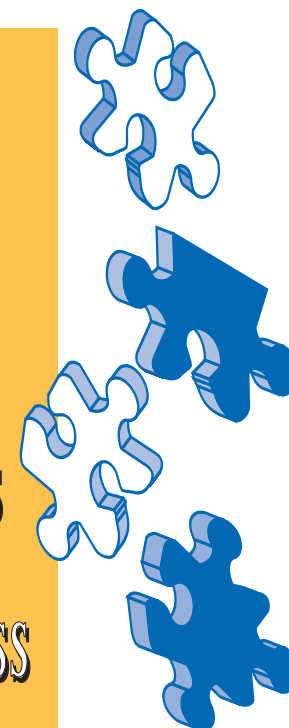


Sam Wolf Granite City Campus  
4950 Maryville Road  
Granite City, IL 62040

NON-PROFIT  
ORGANIZATION  
U.S. POSTAGE  
**PAID**  
SOUTHWESTERN  
ILLINOIS COLLEGE

# Student Support Services

Putting  
Together  
the Pieces  
for Success



# Student Support Services

**Student Support Services at the Sam Wolf Granite City Campus of Southwestern Illinois College can help you achieve your goal of earning a college education. Services include:**

- Tutoring
- Peer mentoring
- Textbook loans
- Calculator loans
- Laptop loans
- Cultural experiences
- College visits
- Workshops
- Monthly newsletter
- Supplemental grant aid
- Assistance with transfer to a four-year institution
- Referral to important services on campus and in the community.

## How Student Support Services Works:

The Student Support Services program, offered only at the Sam Wolf Granite City Campus, provides opportunities for academic development, assists students with basic college requirements, and serves to motivate students towards the successful completion of their postsecondary education.

The purpose of the program is to help students increase their grade point average; stay enrolled in college classes; and transfer to a four-year college or university to earn a bachelor's degree. All services are free to students who qualify.

SSS is directed in part by a volunteer Student Advisory Board. Together with the students and staff the panel helps plan activities and services students want and need.

### How do I Qualify?

You must be a U.S. citizen or a permanent resident to qualify for the SSS program. Also, you must meet at least one of the following guidelines:

- You are a first generation college student (which means neither parent has a bachelor's degree);
- You meet income guidelines as outlined by the U.S. Department of Education; or
- You have a verifiable physical or learning disability.

## What Students Have To Say:

*"I appreciated the equipment loan and computer lab. I don't have a computer and they had the calculator I needed for class."*  
- Crystal of Granite City

*"Each semester we get our grade reports halfway through. I liked hearing what my teacher wrote."*  
- Erica of Granite City

*"TRIO Student Support Services helped me with everything from financial aid programs, to supplies I needed to start each semester. I can't thank them enough for being there and for keeping me informed of things going on in the college community."*  
- Jon of Granite City

*"As an SSS member, I have been very fortunate to enjoy many activities such as trips to various colleges, insightful lecture series, and most importantly, conferences."*  
- Holly of Collinsville

### Is Student Support Services right for me?

To find out if you are eligible for the SSS program, call **618-931-0600, ext. 6743.**

### How do I apply?

You can fill out an application for the Student Support Services program in the SSS office in Room 207 at the Sam Wolf Granite City Campus.

